

Columbus Portfolio Range

Fund Fact Sheet

CRF Balanced Plus

December 2019

Launch date	Fund size
December 2012	R 246.4 million

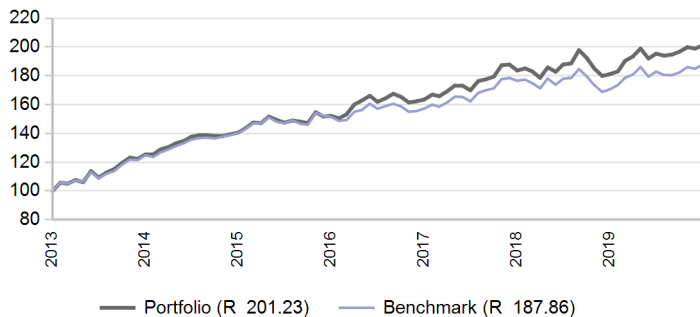
Fund description

Combined - Multi asset class - Specialist

Portfolio description

This portfolio is managed within what Alexander Forbes Investments regards to be aggressive investment parameters. Within each asset class, the investment managers are given specific mandates aimed at growth in capital value. In constructing the local component of this portfolio, Alexander Forbes Investments allocates the assets primarily to equities. The global component has a similar investment profile, with allocation to global equities, bonds, cash and alternative investments.

Value of R 100 invested since inception



Manager weightings

Manager	Weight
Performer	85.8%
Performer Local Equity BB	10.3%
BlackRock ACWI	4.0%
Total	100.0%

Risk stats over 3 Years

	Portfolio	Benchmark
Annualised standard deviation	7.8%	7.3%
Sharpe ratio	0.1	-0.1
Maximum drawdown	9.1%	8.6%
Positive months	63.9%	61.1%

Benchmark allocation

Local asset class	Benchmark	Allocation
Equity	FTSE/JSE Capped Shareholder Weighted All Share Index	15.0%
Combined asset class	Benchmark	Allocation
Balanced	AF Investable Global LMW Median	85.0%
Total		100.0%

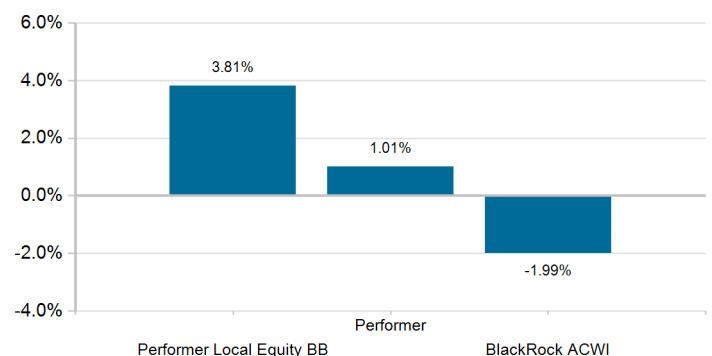
Market summary

	1 Month	3 Months	1 Year	3 Years
FTSE/JSE All Share	3.30%	4.63%	12.05%	7.42%
FTSE/JSE SWIX	3.68%	4.77%	9.32%	5.39%
FTSE/JSE Capped SWIX ALSI	3.09%	5.27%	6.75%	3.46%
FTSE/JSE SA Property	-2.07%	0.58%	1.92%	-3.72%
All Bond Index	1.86%	1.73%	10.32%	9.40%
STeFI Composite index	0.58%	1.74%	7.29%	7.36%
MSCI AC World	-1.24%	0.41%	23.12%	13.19%
FTSE WGBI	-4.34%	-8.16%	2.99%	4.81%

Portfolio returns

	Portfolio	Benchmark
1 Month	1.16%	1.59%
3 Months	2.27%	3.00%
YTD	11.06%	10.08%
1 Year	11.06%	10.08%
3 Years	7.15%	6.11%
5 Years	7.44%	6.03%
Since Inception	10.38%	9.31%

Underlying returns (1 month to December 2019)



Effective asset allocation exposure

Local	70.4%
Equity Excluding Property	42.4%
Financials	11.5%
Basic Materials	9.6%
Consumer Services	8.3%
Consumer Goods	5.1%
Other Securities	3.2%
Industrials	2.0%
Telecommunications	1.3%
Healthcare	1.1%
Technology	0.2%
Consumer Discretionary	0.0%
Oil & Gas	0.0%
Property	3.0%
Bonds	13.4%
< 12 Months	1.7%
1 - 3 Years	0.4%
3 - 7 Years	1.3%
7 - 12 Years	3.8%
12+ Years	6.2%
Cash	5.3%
Commodities	1.6%
Alternatives	4.6%
Balanced	0.0%
Global	28.6%
Equity Excluding Property	22.2%
Property	0.5%
Bonds	0.7%
Cash	5.2%
Balanced	0.0%
Africa	1.0%
Equity Excluding Property	0.9%
Property	0.0%
Cash	0.0%
Alternatives	0.1%

Top 10 equity holdings

Holding	%
NASPERS	4.2%
BRITISH AMERICAN TOBACCO PLC	2.9%
ALLAN GRAY LIFE DOMESTIC EQUITY	2.5%
SASOL	2.4%
STANDARD BANK GROUP	2.2%
PROSUS	1.5%
IMPALA PLATINUM HLDS	1.3%
ANGLO AMERICAN	1.3%
BHP GROUP PLC	1.2%
MTN GROUP	1.1%
% of total portfolio	20.8%

Top 10 fixed interest issuers

Issuer	%
SOUTH AFRICA (REPUBLIC OF)	9.0%
ALEXANDER FORBES PREFERENCE SHARE INVESTMENTS LIMITED	1.3%
MERCER GLOBAL INVESTMENTS MANAGEMENT LTD	0.7%
FIRSTRAND BANK LIMITED	0.5%
ESKOM HOLDINGS SOC LTD	0.5%
STANDARD BANK GROUP LTD	0.4%
NEDBANK GROUP LTD	0.3%
ABSA GROUP LIMITED	0.3%
YIELDX	0.2%
INVESTEC BANK LIMITED	0.1%
% of total portfolio	13.4%

Fees

Period (Annualised, rolling one-year period): 01 Dec 2018 to 30 Nov 2019

Average annual service charge (incl VAT)	0.51%
Underlying manager performance fees expense	0.00%
Underlying global manager expense Underlying fund expense	0.07%
Other expenses	0.18%
Total Expense Ratio (TER)	0.01%
Transaction Costs (TC)	0.76%
Total Investment Charges (TER + TC)	0.06%
	0.82%

FAIS notice and disclaimer

Alexander Forbes Investments Limited is a licensed financial services provider in terms of Section 8 of the Financial Advisory and Intermediary Services Act, 37 of 2002, as amended, FAIS licence number 711. This information is not advice as defined and contemplated in the Financial Advisory and Intermediary Services Act, 37 of 2002, as amended. Past investment returns are not indicative of future returns. This product is not guaranteed. Please be advised that there may be representatives acting under supervision. Company Registration Number: 1997/000595/06. Pension Fund Administrator No.24/217. Long Term Insurance Act No. 00018/001. Postal address: P.O. Box 786055, Sandton 2146. Physical Address: 115 West Street, Sandown, 2196. Telephone number: +27 (11) 505 6000. The complaints policy and conflict of interest management policy can be found on the Alexander Forbes Investments website: <http://www.alexanderforbesinvestments.co.za>.

Notes

1. Market data is sourced from Datastream. The FTSE/JSE Africa Index Series is calculated by FTSE International Limited ("FTSE") in conjunction with the JSE Securities Exchange South Africa ("JSE") in accordance with standard criteria. The FTSE/JSE Africa Index Series is the proprietary information of FTSE and the JSE. All copyright subsisting in the FTSE/JSE Africa Index Series index values and constituent lists vests in FTSE and the JSE jointly. All their rights are reserved.
2. All returns are before deduction of Alexander Forbes Investments' policy fees and performance fees, but net of other expenses. Returns for periods exceeding one year are annualized and all returns are quoted in Rands. Past investment returns are not indicative of future returns.
3. All holdings information is based on latest available data.
4. There may be differences in totals due to rounding.
5. Kindly note that with effect from 1 April 2017, all Alexander Forbes Investments South African equity benchmarks have changed from the FTSE/JSE SWIX to the FTSE/JSE Capped SWIX ALSI Index.