



COLUMBUS RETIREMENT FUNDS

Columbus Portfolio Range

Fund Fact Sheet

CRF Balanced Plus

April 2019

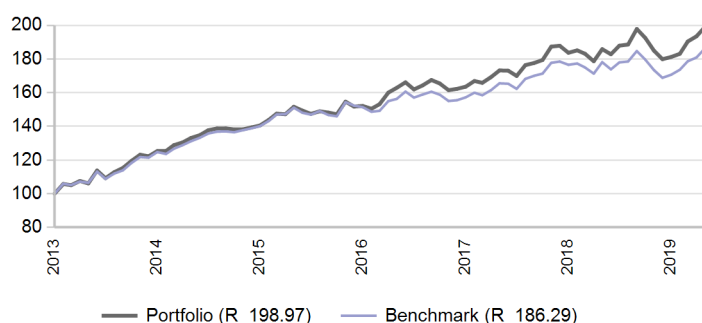
Launch date	Fund size
December 2012	R 228.7 million

Fund description

Combined - Multi asset class - Specialist

Portfolio description

This portfolio is managed within what Alexander Forbes Investments regards to be aggressive investment parameters. Within each asset class, the investment managers are given specific mandates aimed at growth in capital value. In constructing the local component of this portfolio, Alexander Forbes Investments allocates the assets primarily to equities. The global component has a similar investment profile, with allocation to global equities, bonds, cash and alternative investments.

Value of R 100 invested since inception**Manager weightings**

Manager	Weight
Performer	85.3%
Performer Local Equity BB	10.7%
BlackRock ACWI	4.0%
Total	100.0%

Risk stats over 3 Years

	Portfolio	Benchmark
Annualised standard deviation	7.9%	7.2%
Sharpe ratio	0.0	-0.1
Maximum drawdown	9.1%	8.6%
Positive months	63.9%	63.9%

Benchmark allocation

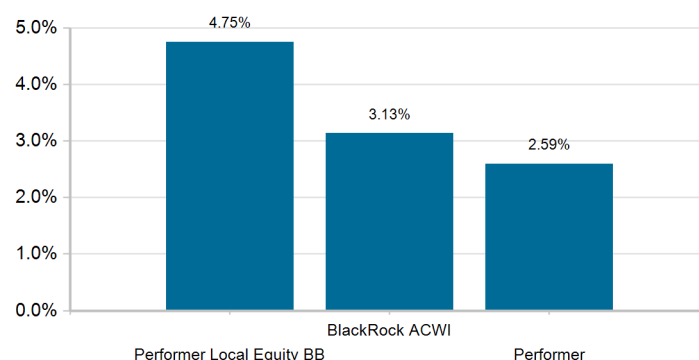
Local asset class	Benchmark	Allocation
Equity	FTSE/JSE Capped Shareholder Weighted All Share Index	15.0%
Combined asset class	Benchmark	Allocation
Balanced	AF Investable Global LMW Median	85.0%
Total		100.0%

Market summary

	1 Month	3 Months	1 Year	3 Years
FTSE/JSE All Share	4.23%	9.47%	3.90%	6.55%
FTSE/JSE SWIX	5.72%	8.71%	1.80%	5.24%
FTSE/JSE Capped SWIX ALSI	5.00%	6.11%	-1.67%	3.15%
FTSE/JSE SA Property	3.17%	-4.13%	-9.63%	-3.46%
All Bond Index	0.75%	1.64%	4.97%	9.70%
STeFI Composite index	0.59%	1.76%	7.27%	7.43%
MSCI AC World	2.50%	16.02%	20.72%	11.77%
FTSE WGBI	-1.34%	7.77%	14.70%	0.74%

Portfolio returns

	Portfolio	Benchmark
1 Month	2.84%	2.98%
3 Months	8.67%	7.29%
YTD	9.81%	9.16%
1 Year	7.07%	4.59%
3 Years	6.89%	6.02%
5 Years	8.37%	7.27%
Since Inception	11.32%	10.18%

Underlying returns (1 month to April 2019)

Effective asset allocation exposure

Local	71.0%
Equity Excluding Property	43.9%
Financials	10.6%
Basic Materials	10.3%
Consumer Services	9.9%
Consumer Goods	5.2%
Other Securities	3.3%
Industrials	2.0%
Telecommunications	1.4%
Healthcare	1.1%
Technology	0.2%
Oil & Gas	0.0%
Property	2.9%
Bonds	12.2%
< 12 Months	1.8%
1 - 3 Years	0.7%
3 - 7 Years	1.0%
7 - 12 Years	4.3%
12+ Years	4.4%
Cash	6.3%
Commodities	1.3%
Alternatives	4.4%
Global	28.2%
Equity Excluding Property	22.2%
Property	0.6%
Bonds	0.6%
Cash	4.8%
Balanced	0.0%
Africa	0.8%
Equity Excluding Property	0.8%
Property	0.0%
Bonds	0.0%
Cash	0.0%

Top 10 equity holdings

Holding	%
NASPERS LTD	5.4%
SASOL LTD	3.4%
STANDARD BANK GROUP LTD	2.7%
ALLAN GRAY LIFE DOMESTIC EQUITY	2.6%
BRITISH AMERICAN TOBACCO PLC	2.6%
BHP GROUP PLC	1.9%
ANGLO AMERICAN PLC	1.8%
COMPAGNIE FINANCIERE RICHEMONT SA	1.2%
ABSA GROUP LIMITED	1.1%
MTN GROUP LTD	1.1%
% of total portfolio	23.8%

Top 10 fixed interest issuers

Issuer	%
SOUTH AFRICA (REPUBLIC OF)	7.8%
SANLAM LIMITED	0.7%
STANDARD BANK GROUP LTD	0.6%
FIRSTRAND BANK LIMITED	0.6%
MERCER GLOBAL INVESTMENTS MANAGEMENT LTD	0.5%
ESKOM HOLDINGS SOC LTD	0.5%
OLD MUTUAL ASSET MANAGERS	0.4%
ABSA GROUP LIMITED	0.3%
NEDBANK GROUP LTD	0.3%
YIELDX	0.1%
% of total portfolio	11.8%

Fees

Performance-Based Fees (1 year)	0.03%
Performance fee	0.03%

FAIS notice and disclaimer

Alexander Forbes Investments Limited is a licensed financial services provider in terms of Section 8 of the Financial Advisory and Intermediary Services Act, 37 of 2002, as amended, FAIS licence number 711. This information is not advice as defined and contemplated in the Financial Advisory and Intermediary Services Act, 37 of 2002, as amended. Past investment returns are not indicative of future returns. This product is not guaranteed. Please be advised that there may be representatives acting under supervision. Company Registration Number: 1997/000595/06. Pension Fund Administrator No.24/217. Long Term Insurance Act No. 00018/001. Postal address: P.O. Box 786055, Sandton 2146. Physical Address: 115 West Street, Sandown, 2196. Telephone number: +27 (11) 505 6000. The complaints policy and conflict of interest management policy can be found on the Alexander Forbes Investments website: <http://www.alexanderforbesinvestments.co.za>.

Notes

- Market data is sourced from Datastream. The FTSE/JSE Africa Index Series is calculated by FTSE International Limited ("FTSE") in conjunction with the JSE Securities Exchange South Africa ("JSE") in accordance with standard criteria. The FTSE/JSE Africa Index Series is the proprietary information of FTSE and the JSE. All copyright subsisting in the FTSE/JSE Africa Index Series index values and constituent lists vests in FTSE and the JSE jointly. All their rights are reserved.
- All returns are before deduction of Alexander Forbes Investments' policy fees and performance fees, but net of other expenses. Returns for periods exceeding one year are annualized and all returns are quoted in Rands. Past investment returns are not indicative of future returns.
- All holdings information is based on latest available data.
- There may be differences in totals due to rounding.
- Kindly note that with effect from 1 April 2017, all Alexander Forbes Investments South African equity benchmarks have changed from the FTSE/JSE SWIX to the FTSE/JSE Capped SWIX ALSI Index.