

# Multi-Asset Class Portfolio Range

## Fund Fact Sheet

### CRF Balanced

October 2017

**Launch date**  
June 2008

**Fund size**  
R 482.7 million

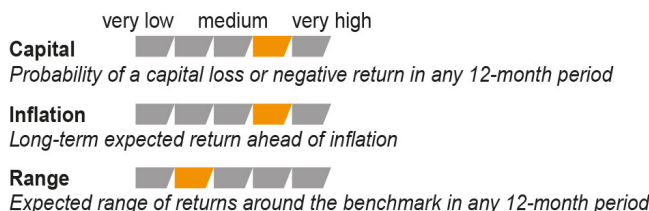
#### Fund description

Combined - Multi asset class - Discretionary

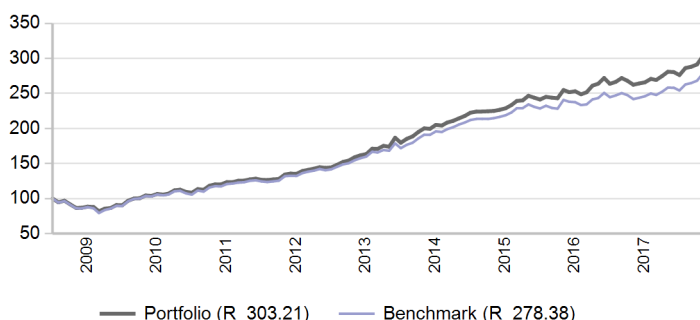
#### Portfolio description

Performer is a moderate-to-high risk balanced portfolio and targets CPI inflation beating returns over the long term. The portfolio adopts Living\*Investing as a philosophy, which entails a risk-based forward-thinking investment approach, with the aim to achieve client outcomes with a greater degree of certainty. The asset allocation is dynamic to allow the portfolio to participate on the upside and to protect on the downside in falling markets which means accumulating from a higher base, thus adding value in the long term. The portfolio blends diversified strategies including alternatives, both locally and offshore, to capture different sources of returns.

#### Risk Profile



#### Value of R 100 invested since inception



#### Benchmark allocation

Combined asset class	Benchmark	Allocation
Balanced	AF Investable Global LMW Median	100.0%
<b>Total</b>		<b>100.0%</b>

#### Market summary

	1 Month	3 Months	1 Year	3 Years
FTSE/JSE All Share	6.26%	8.12%	20.11%	9.00%
FTSE/JSE SWIX	6.51%	7.20%	17.27%	8.63%
FTSE/JSE Capped SWIX ALSI	4.88%	5.55%	13.43%	7.11%
FTSE/JSE SA Property	1.99%	3.99%	11.13%	10.92%
All Bond Index	-2.30%	-0.20%	5.04%	5.61%
STeFI Composite index	0.61%	1.82%	7.60%	7.07%
MSCI AC World	7.13%	12.21%	28.89%	17.30%
Citi WGBI	4.39%	6.81%	4.85%	9.55%

#### Portfolio returns

	Portfolio	Benchmark
1 Month	4.10%	3.83%
3 Months	5.96%	5.97%
YTD	14.07%	13.17%
1 Year	15.58%	15.08%
3 Years	10.46%	9.05%
5 Years	13.79%	12.49%
Since Inception	12.50%	11.49%

#### Manager weightings

Manager	Weight
Performer Domestic Balanced	67.7%
Performer International	25.0%
Performer Domestic Hedge Fund	4.3%
Private Markets SA	1.9%
Performer Africa	1.1%
Banker	0.0%
<b>Total</b>	<b>100.0%</b>

#### Risk stats over 3 Years

	Portfolio	Benchmark
Annualised standard deviation	6.4%	6.3%
Sharpe ratio	0.6	0.4
Maximum drawdown	3.5%	3.5%
Positive months	66.7%	63.9%

Effective asset allocation exposure

<b>Local</b>	<b>73.1%</b>
<b>Equity Excluding Property</b>	<b>40.9%</b>
Basic Materials	9.3%
Financials	9.1%
Consumer Services	8.4%
Consumer Goods	7.7%
Industrials	2.7%
Healthcare	1.6%
Telecommunications	1.2%
Other Securities	0.6%
Technology	0.3%
<b>Property</b>	<b>2.9%</b>
<b>Bonds</b>	<b>12.3%</b>
< 12 Months	1.3%
1 - 3 Years	1.4%
3 - 7 Years	1.5%
7 - 12 Years	4.0%
12+ Years	4.1%
<b>Cash</b>	<b>8.1%</b>
<b>Commodities</b>	<b>2.5%</b>
<b>Alternatives</b>	<b>6.4%</b>
<b>Global</b>	<b>26.6%</b>
<b>Equity Excluding Property</b>	<b>22.9%</b>
<b>Property</b>	<b>0.2%</b>
<b>Bonds</b>	<b>0.5%</b>
<b>Cash</b>	<b>2.9%</b>
<b>Commodities</b>	<b>0.0%</b>
<b>Balanced</b>	<b>0.1%</b>
<b>Africa</b>	<b>0.3%</b>
<b>Equity Excluding Property</b>	<b>0.2%</b>
<b>Property</b>	<b>0.0%</b>
<b>Cash</b>	<b>0.0%</b>

Fees

Performance-Based Fees (1 year)	0.09%
Global Manager Cost	0.16%

FAIS notice and disclaimer

Alexander Forbes Investments Limited is a licenced financial services provider in terms of Section 8 of the Financial Advisory and Intermediary Services Act, 37 of 2002, as amended, FAIS licence number 711. This information is not advice as defined and contemplated in the Financial Advisory and Intermediary Services Act, 37 of 2002, as amended. Investment returns are calculated via Statpro Performance and Attribution. Past investment returns are not indicative of future returns. This product is not guaranteed. Please be advised that there may be representatives acting under supervision. Company Registration Number: 1997/000595/06. Pension Fund Administrator No.24/217. Long Term Insurance Act No. 00018/001. Postal address: P.O. Box 786055, Sandton 2146. Physical Address: 115 West Street, Sandown, 2196. Telephone number: +27 (11) 505 6000. The complaints policy and conflict of interest management policy can be found on the Alexander Forbes Investments website: <http://www.alexanderforbesinvestments.co.za>.

Notes

- Market data is sourced from Datastream. The FTSE/JSE Africa Index Series is calculated by FTSE International Limited ("FTSE") in conjunction with the JSE Securities Exchange South Africa ("JSE") in accordance with standard criteria. The FTSE/JSE Africa Index Series is the proprietary information of FTSE and the JSE. All copyright subsisting in the FTSE/JSE Africa Index Series index values and constituent lists vests in FTSE and the JSE jointly. All their rights are reserved.
- All returns are before deduction of Alexander Forbes Investments' policy fees and performance fees, but net of other expenses. Returns for periods exceeding one year are annualized and all returns are quoted in Rands. Past investment returns are not indicative of future returns.
- Performance fees are paid directly to the manager for performance in excess of a pre-defined hurdle. Policy fees are payable directly to Alexander Forbes Investments. The institutional fee is based on a sliding fee scale and is dependent on the size of assets invested in the portfolio. Clients are referred to our website for more information.
- Global manager cost is the actual cost paid directly to the asset manager to manage the offshore assets. It represents an annualized number and is separate from the Alexander Forbes Investments policy fee.
- All holdings information is based on latest available data.
- There may be differences in totals due to rounding.

Top 10 equity holdings

Holding	%
NASPERS	5.8%
BRITISH AMERICAN TOBACCO PLC	3.6%
SASOL	3.1%
STANDARD BANK GROUP	2.5%
COMPAGNIE FINANCIERE RICHEMONT AG	2.1%
OLD MUTUAL	1.9%
BHP BILLITON	1.4%
STEINHOFF INTERNATIONAL HOLDINGS N.V.	1.2%
ASPEN PHARMACARE HOLDINGS	0.9%
MTN GROUP	0.9%
<b>% of total portfolio</b>	<b>23.7%</b>

Top 10 fixed interest issuers

Issuer	%
SOUTH AFRICA (REPUBLIC OF)	6.9%
FIRSTRAND BANK LIMITED	0.9%
STANDARD BANK GROUP LTD	0.7%
MERCER GLOBAL INVESTMENTS MANAGEMENT LTD	0.5%
BARCLAYS AFRICA GROUP LIMITED	0.5%
NEDBANK GROUP LTD	0.5%
ESKOM HOLDINGS SOC LTD	0.4%
YIELDX	0.4%
PRUDENTIAL INVESTMENT MANAGERS	0.3%
INVESTEC BANK LIMITED	0.3%
<b>% of total portfolio</b>	<b>11.4%</b>